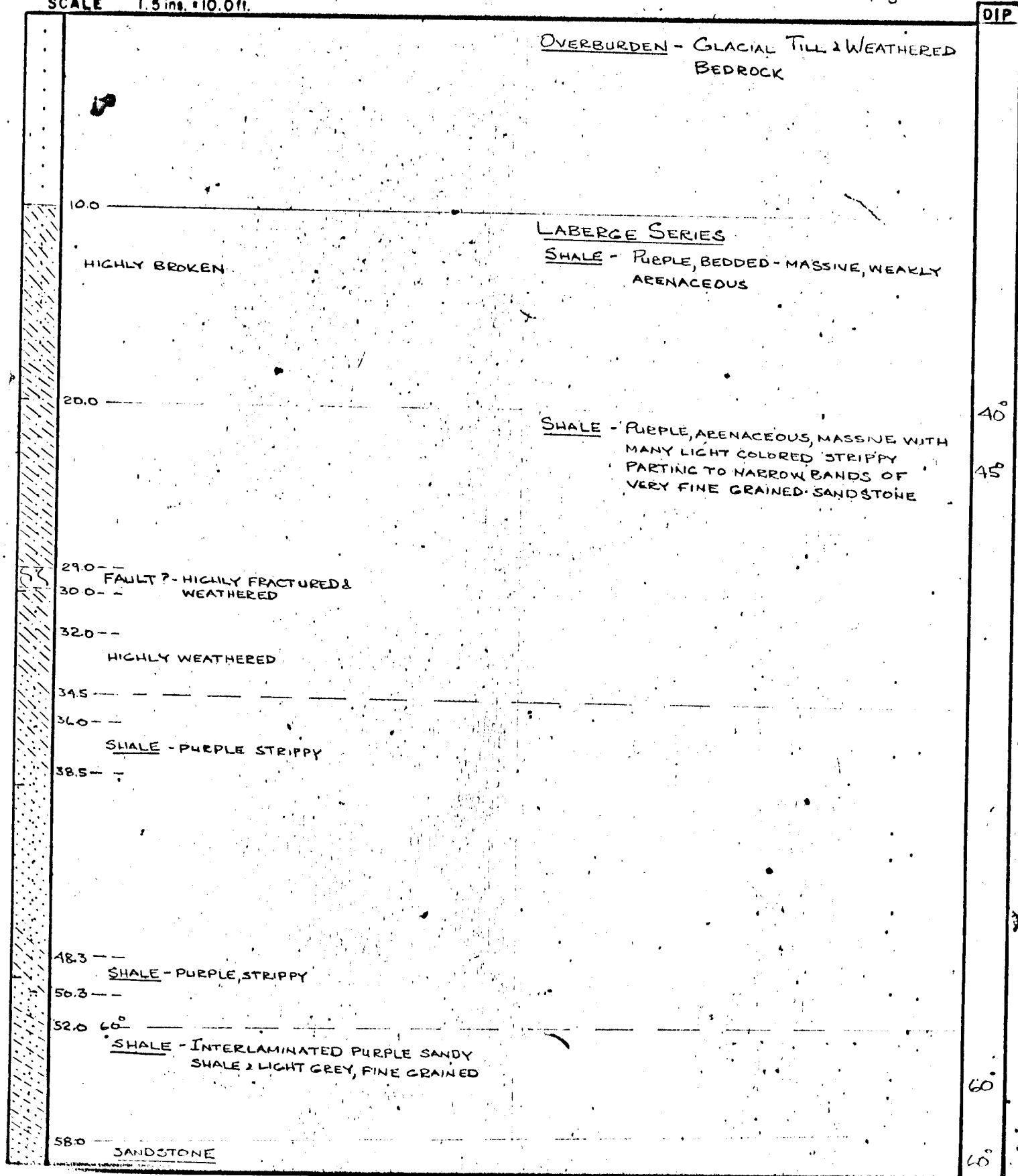


DRILL HOLE LOG  
ARJAY KIRKER RESOURCES LTD.  
NORDENSKIOLD COAL AREA

HOLE No. 2  
PAGE 1 OF 10

COORDINATES 22,321,410.69 N; -189,712.62 E  
ELEVATION 2609.7  
DIP -50°  
AZIMUTH 040°  
SCALE 1.5 ins. = 10.0 ft.

CORE SIZE HQ 0-600 FT  
HOLE STARTED 7 SEPTEMBER, 1972  
HOLE COMPLETED 14 SEPTEMBER, 1972  
LOGGED BY M.P. PHILLIPS



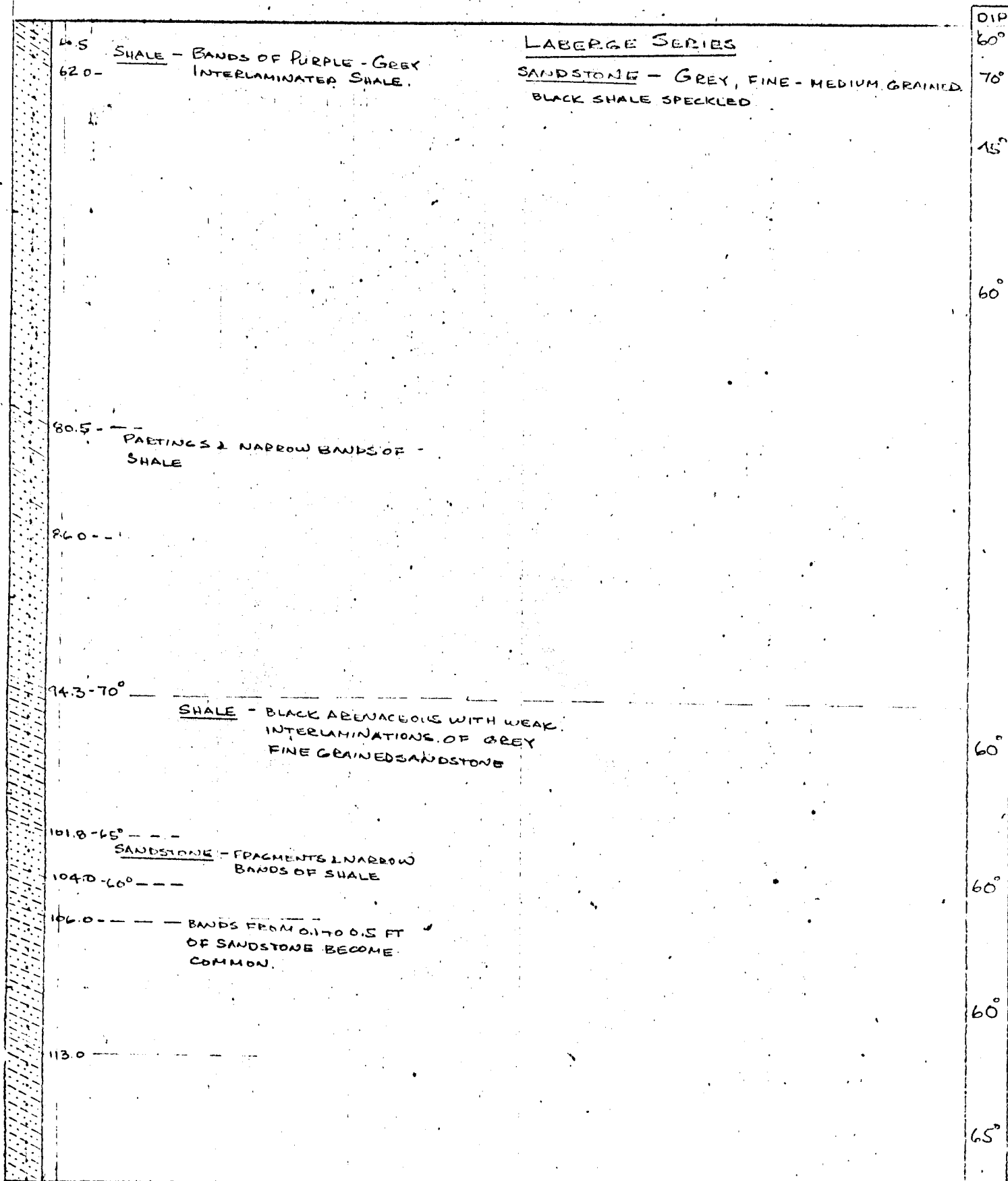
# DRILL HOLE LOG

ARJAY KIRKER RESOURCES LTD  
DIVISION MOUNTAIN COAL PROSPECT

COORDINATES :

DIP :

HOLE NO 21  
PAGE 2 OF 10



# DRILL HOLE LOG

ARJAY KIRKER RESOURCES LTD  
DIVISION MOUNTAIN COAL PROSPECT

COORDINATES:

DIP:

HOLE NO 1  
 PAGE 3 OF 10

## LABERGE SERIES

SHALE

126.5 - 56° - -

SANDSTONE - GREY, FINE TO MEDIUM  
 GRAINED WITH CONTORTED  
 FOLDED NARROW BANDS  
 OF INTERLAMINATED BLACK  
 SHALE & GREY FINE GRAINED  
 SANDSTONE

132.0 - 70° - -

PARTINGS & BANDS UP TO 0.3 FT  
 OF GREY FINE GRAINED SANDSTONE  
 COMMON.

141.5 - - -

SHALE - BLACK, ARGILLIC WITH WELL  
 SPACED LAMINATIONS & OCCASIONAL NARROW  
 BANDS TO 0.2 FT OF GREY FINE GRAINED  
 SANDSTONE. LAMINATION AT 0.2 FT  
 INTERVAL

171.0 - - -

LAMINATIONS & BANDS UP TO 0.3 FT  
 WIDE BECOME COMMON.

DIP  
 60°  
 70°  
 70°  
 65°  
 65°  
 65°  
 60°  
 60°  
 60°

# DRILL HOLE LOG

ARJAY KIRKER RESOURCES LTD  
DIVISION MOUNTAIN COAL PROSPECT

COORDINATES:

DIP:

HOLE NO 2  
 PAGE 4 OF 10

## LABERGE SERIES SHALE

186.3 - SANDSTONE - GREY, FINE GRAINED  
 187.0 -

SHALE - BLACK, ARENACEOUS, WITH GREY  
 FINE GRAINED SANDSTONE LAMINATIONS AT 0.1 - 0.2  
 FT INTERVALS, OCCASIONAL BAND OF  
 GREY FINE GRAINED SANDSTONE

199.0 -  
 CRUMBLY ALONG BEDDING PLANES

212.0 -

218.0 - 65° -

SANDSTONE - GREY, FINE GRAINED, MASSIVE

223.5 - BANDS & FRAGMENTS UP TO 0.2 FT  
 OF BLACK ARENACEOUS SHALE  
 224.0 - IN GRITTY SANDSTONE

229.3 - 65° - SHALE - ARENACEOUS, WEAKLY LAMINATED  
 230.3 - 55° -

230.8 - 55° -  
SHALE - ARENACEOUS, LAMINATED

234.0 - 60° - SANDSTONE - COARSE GRAINED WITH  
 MINOR SHALE LENSES &  
 0.3 FT FINE GRAINED

237.0 - 65° - SANDSTONE BOULDER

SHALE -

DIP

65°

65°

65°

65°

65°

60°

60°

65°

60°

60°

# DRILL HOLE LOG

ARJAY KIRKER RESOURCES LTD  
DIVISION MOUNTAIN COAL PROSPECT

COORDINATES:

DIP -

HOLE NO 2  
 PAGE 5 OF 10

LABERGE SERIES - SHALE  
 BLACK ARENACEOUS SHALE WITH  
 LAMINATIONS OF GRLY, VERY FINE  
 GRAINED SANDSTONE, AV 1-2 PER  
 0.1 FT. OCCASIONAL BANDS TO 0.1 FT

255.0 - 60° -

BANDS UP TO 0.3 FT OF  
 GREY FINE GRAINED  
 SANDSTONE BECOME COMMON

260.0 - 60° -

SANDSTONE - FINE GRAINED, GRADING INTO GRITTY

261.3 - 70° -

SHALE LAMINATED & SANDSTONE - FINE GRAINED  
 INTERBEDDED

263.6 - 60° -

SANDSTONE - FINE-MEDIUM GRAINED

265.0 - 65° -

270.0 - 60° -

SANDSTONE - 0.5 FT. GREY, FINE GRAINED

285.0 - 60° -

BANDS OF GREY, FINE GRAINED  
SANDSTONE UP TO 0.3 FT PRESENT

289.6 - 60° -

SANDSTONE - GREY, FINE GRAINED WITH  
 MINOR BANDS TO 0.2 FT &  
 PARTINGS OF BLACK ARENACEOUS

293.0 -

GRADATIONAL SHALE

SANDSTONE - GREY, MASSIVE, MEDIUM TO  
 COARSE GRAINED

296.0 -

CASTS OF BLACK LAMINATED SHALE COMMON

299.2 -

SANDSTONE - FINE GRAINED, FINE CHIPS OF SHALE AND COAL

DIP

60°

60°

60°

65°

70°

65°

60°

60°

60°

ARJAY KIRKER RESOURCES LTD  
DIVISION MOUNTAIN COAL PROSPECT

COORDINATES:

DIP -

HOLE NO 2  
PAGE 6 OF 10

		LABERGE SERIES -	DIP
300.3	SHALE - INTERLAMINATED		60°
301.0	SANDSTONE - FINE GRAINED, PARTINGS OF SHALE & COAL COMMON		
303.5		SANDSTONE - GREY, MEDIUM GRAINED MASSIVE	
305.2	CASTS OF SHALE		
306.3	COMMON		
309.0	SHALE - LAMINATED		60°
310.0			
311.5	SANDSTONE - FINE GRAINED, PARTINGS & LENSES OF SHALE COMMON		
	SHALE - LAMINATED WITH BANDS UP TO 1.0 FT OF GREY FINE GRAINED SANDSTONE. SHALE CAST COMMON NEAR TOP CONTACT		60°
315.5 - 60°			
	SANDSTONE - SHALE CASTS COMMON		
317.0 - 60°			
	SANDSTONE - GREY FINE GRAINED		
322.0	GRADATIONAL		60°
	SANDSTONE - GREY, MEDIUM GRAINED, CARBONATE FILLED FRACTURES		
326.0 - 60°			60°
	SHALE & SANDSTONE INTERBEDDED - BED UP TO 0.5 FT		
329.1 - 60°			
	SANDSTONE - GREY, FINE - MEDIUM GRAINED OCCASIONAL SHALE CAST		
333.1	SHALE - MASSIVE, ARENACEOUS		60°
334.2	IRREGULAR		
	SANDSTONE - GREY, MEDIUM GRAINED, LARGE CASTS OF LAMINATED, SHALE COMMON		60°
339.0 - 60°			
	SHALE - SANDSTONE INTERBEDDED	GREY, FINE GRAINED SANDSTONE & INTERLAMINATED GREY, FINE GRAINED SANDSTONE & BLACK ARENACEOUS SHALE - BANDS - 0.1 TO 1.0 FT WIDE	55°
353.5	SHALE - BLACK ARENACEOUS WITH FINE GREY SANDSTONE LAMINATIONS		55°
355.1			
	SANDSTONE - GREY, FINE GRAINED, WITH PARTINGS OF SHALE & MINOR COAL		
358.1	SHALE		

# DRILL HOLE LOG

ARJAY KIRKER RESOURCES LTD  
DIVISION MOUNTAIN COAL PROSPECT

COORDINATES:

DIP:

HOLE NO 2  
PAGE 7 OF 10

		DIP
	<p><u>SHALE</u> - BLACK ARGILLACEOUS WITH MANY PARTINGS &amp; NARROW BANDS OF GREY FINE GRAINED SANDSTONE</p> <p><u>LABERGE SERIES</u></p>	
365.5	<u>SANDSTONE</u> - GREY FINE GRAINED	
366.5		
367.5 - 60°	<u>SANDSTONE</u> - GREY, FINE GRAINED WITH NARROW BANDS - 0.2 FT OF LAMINATED SHALE	
370.0 - 60°	<u>SHALE</u> - INTERLAMINATED SHALE & FINE GRAINED SANDSTONE. IN PLACES HIGHLY CONTORTED & FRACTURED	
374.6 - 70°	<u>SANDSTONE</u> - MEDIUM GRAINED	
377.0 - 65°	<u>SHALE</u> - INTERLAMINATED WITH FINE GRAINED SANDSTONE HIGHLY FRACTURED & CONTORTED	
380.0	<u>SANDSTONE</u> - DIRTY GREY COLOR, MEDIUM - COARSE GRAINED, HIGHLY FRACTURED WITH CARBONATE VEINING	
385.7 - 25°	<u>SANDSTONE</u> - DRAGGED SHALE BANDS	
387.8 - 45°	FAULT CONTACT <u>HUTSHI GROUP - ANDESITE</u>	
391.2 - 35°	BRECCIATED & FAULTED CONTACT - PARALLEL BEDDING? <u>SANDSTONE &amp; SHALE</u> - INTERBANDING, HIGHLY FRACTURED & DEAG FOLDED	
393.7 - 60°	<u>SANDSTONE</u> - BROWN, FINE GRAINED - GRITTY WITH OCCASIONAL SHALE BANDS & FRAGMENTS.	
398.0	STRONGLY ARGILLACEOUS	
399.7		
406.0	GRADATIONAL	
407.0	<u>CONGLOMERATE</u> - LOOSELY PACKED, FINE - MEDIUM ANGULAR PEBBLE CONGLOMERATE <u>SANDSTONE</u> - BROWN, STRONGLY ARGILLACEOUS FINE GRAINED, MASSIVE	55°
413.8	<u>SANDSTONE</u> - BROWN, MEDIUM TO COARSE GRAINED WITH SCATTERED UP TO 0.05 FT ANGULAR QUARTZ DEPHUS	55°
416.2	<u>SANDSTONE</u> - GREY, FINE GRAINED	
419.5 - 60°	CHILLED CONTACT <u>HUTSHI GROUP - ANDESITE</u>	

DRILL HOLE LOG

ARJAY KIRKER RESOURCES LTD  
DIVISION MOUNTAIN COAL PROSPECT

COORDINATES:

DIP:

HOLE NO 2  
 PAGE 8 OF 10

HUTSHI GROUP - ANDESITE

DIP

430.5-70°

LABERGE SERIES

SANDSTONE - GREY, SLIGHT-MODERATELY  
 ARGILLACEOUS, FINE-MEDIUM  
 GRAINED, MINOR, TO 0.05 FT  
 SHALE FRAGMENTS

443.5-60° - SHALE - 0.2 FT

445.5-60°

SANDSTONE DARK GREY, FINE GRAINED  
 IN PLACES STRONGLY ARGILLACEOUS  
 GRADING TO NARROW INTERLAMINATED  
 SHALE. OCCASIONAL CASTS OF SHALE

454.4 - GRADATIONAL

SANDSTONE - GREY FINE-MEDIUM GRAINED

461.0 - GRADATIONAL

SANDSTONE - GREY, COARSE GRAINED WITH  
 NUMEROUS ANGULAR QUARTZ & SHALE  
 PEPPLES TO 1/4-1/2 INCH.

470.0-65°

SANDSTONE - DARK, ARGILLACEOUS, FINE GRAINED  
 WITH FAINT SHALE PARTINGS AND WISPS  
 INTERLAMINATED IN NARROW BANDS  
 OF BLACK SHALE

478.2-70°

SHALE - BLACK ARENACEOUS, WITH PARTING OF FINE GRAINED  
SANDSTONE

60

60

65

70



# DRILL HOLE LOG

ARJAY KIRKER RESOURCES LTD  
DIVISION MOUNTAIN COAL PROSPECT

COORDINATES :

DIP -

HOLE NO 2  
PAGE 9 OF 10

480.4 - 70°	SHALE	LABERGE SERIES	DIP 70°
		SANDSTONE - GREY, FINE GRAIN MASSIVE WITH MINOR GRIT BANDS UP TO 1 FT.	
486.0 - 70°	SHALE -	INTERLAMINATED FINE GRAINED SANDSTONE	60°
488.7 -	SANDSTONE -	DARK BROWN, FINE GRAINED, STRONGLY ARGILLACEOUS WITH NARROW BANDS OF SHALE PARTINGS & SHALE CHIPS	70°
493.8 - 60°	SHALE -	BLACK, ARENACEOUS WITH LAMINATIONS AND OCCASIONAL NARROW BANDS UP TO 0.2 FT OF GREY, FINE GRAINED SANDSTONE	65°
512.0 -		BANDS UP TO 0.5 FT OF GREY FINE GRAINED SANDSTONE BECOME COMMON	70°
516.0 -	SANDSTONE -	GREY, MEDIUM GRAINED - CRITTY WITH SCATTER, ANGULAR PEBBLES FROM 1/4" - 1/2" WIDTH	70°
522.5 - GRADATIONAL -	SANDSTONE -	DARK GREY, FINE GRAINED WITH DRAGGED PARTINGS OF BLACK SHALE IN CENTER	70°
525.5 - GRADATIONAL -			
534.2 - 60°	SHALE -	LAMINATED	70°
535.0 -			
536.2 - 70°	SHALE -	BLACK, LAMINATED, ARENACEOUS WITH BANDS UP TO 0.5 FT OF FINE & MEDIUM GRAINED QUARTZITE	70°
539.0 - 70°	SANDSTONE		

# DRILL HOLE LOG

ARJAY KIRKER RESOURCES LTD  
DIVISION MOUNTAIN COAL PROSPECT

COORDINATES:

DIP: -

HOLE NO 2  
 PAGE 10 OF 10

SANDSTONE	BROWN, FINE GRAINED, OCCASIONALLY MEDIUM GRAINED, OFTEN WITH PARTINGS OF BLACK SHALE & COAL	LABERGE SERIES	DIP
			70°
			65°
552.0	TRANSITION		
554.2	<u>SANDSTONE</u> - GREY, FINE - COARSE GRAINED UP TO 2 FT ARGILLACEOUS GRIT BANDS		65°
571.8 GRADATIONAL -	GRIT DARK, STRONGLY ARGILLACEOUS, COARSE GRAINED SANDSTONE WITH ABUNDANT 1/4" ANGULAR QUARTZ PEBBLES	<u>SANDSTONE</u> - GREY, COARSE GRAINED - GRITTY WITH STRONG FRACTURING & WEATHERING	
574.2 - GRADATIONAL -			
575.5 -	<u>SANDSTONE</u> - WITH COAL & SHALE PARTINGS		
576.0 -			
586.0 - 60°	<u>SHALE</u> - BLACK INTERLAMINATED WITH FINE GRAINED SANDSTONE		
587.4 - 60°	<u>SANDSTONE</u> - FINE GRAINED, WITH OCCASIONAL BLACK SHALE PARTING		70°
592.2	<u>SANDSTONE</u> - MEDIUM - COARSE GRAINED WITH SCATTER PEBBLES TO 0.1 FT.		60°
595.3 - 60°	<u>SANDSTONE</u> - FINE GRAINED, WITH 0.1 TO 0.5 FT BANDS WITH COAL & SHALE LAMINATIONS		
600.0	END OF HOLE		70°